



CORPORATE PRESENTATION

IDEKO

MEMBER OF BASQUE RESEARCH
& TECHNOLOGY ALLIANCE

2022

ideko.es

IDEKO is a Research Center
member of **BRTA**, specialized
in **Advanced Manufacturing**,
with special focus on precision
machines and processes and
Artificial Intelligence in
manufacturing.



WHO WE
ARE

About Us



1986
-
1996

IK4  IDEKO
Research Alliance

2008
-
2020



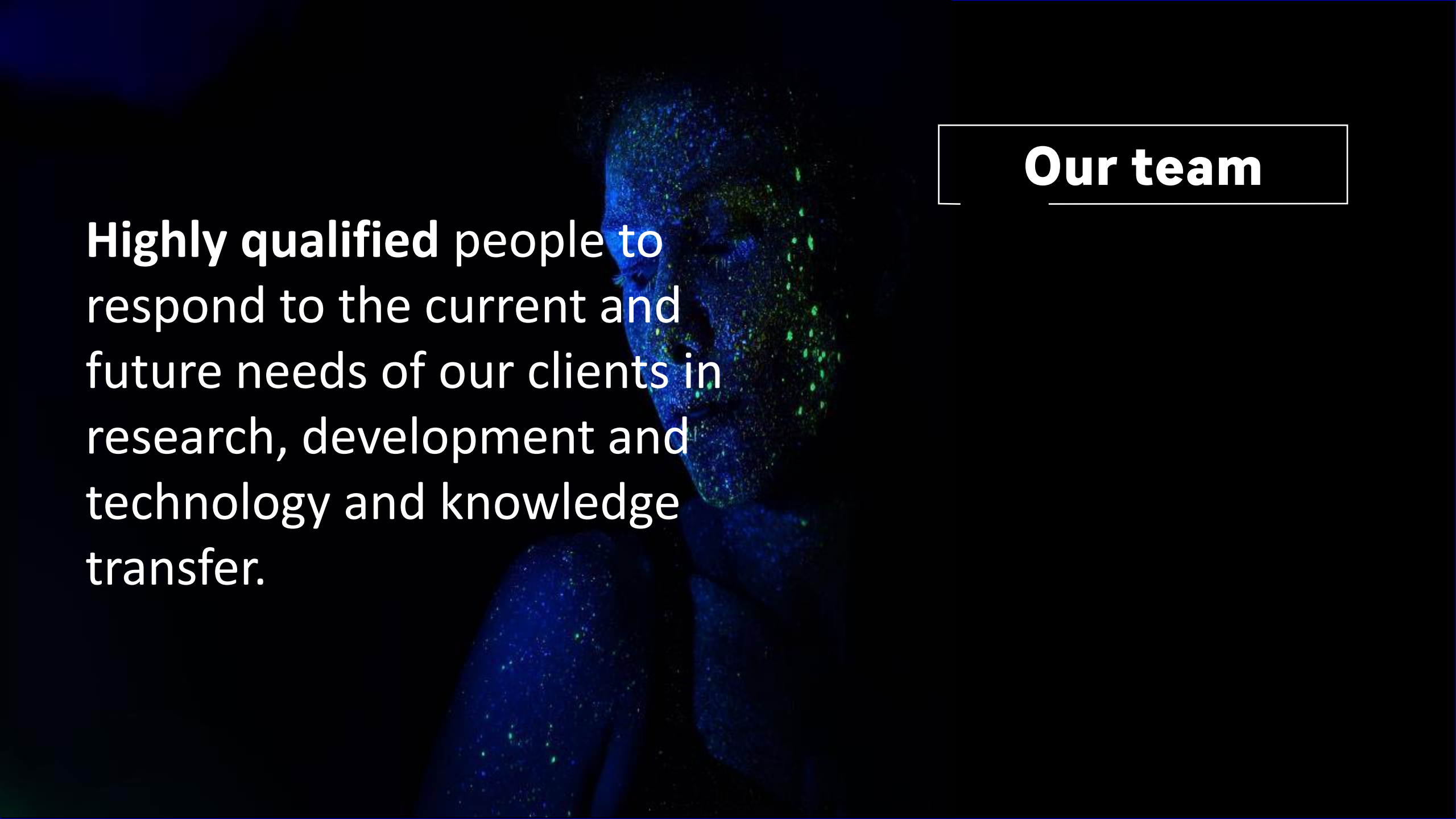
IDEKO
MEMBER OF BASQUE RESEARCH
& TECHNOLOGY ALLIANCE



1997
-
2007



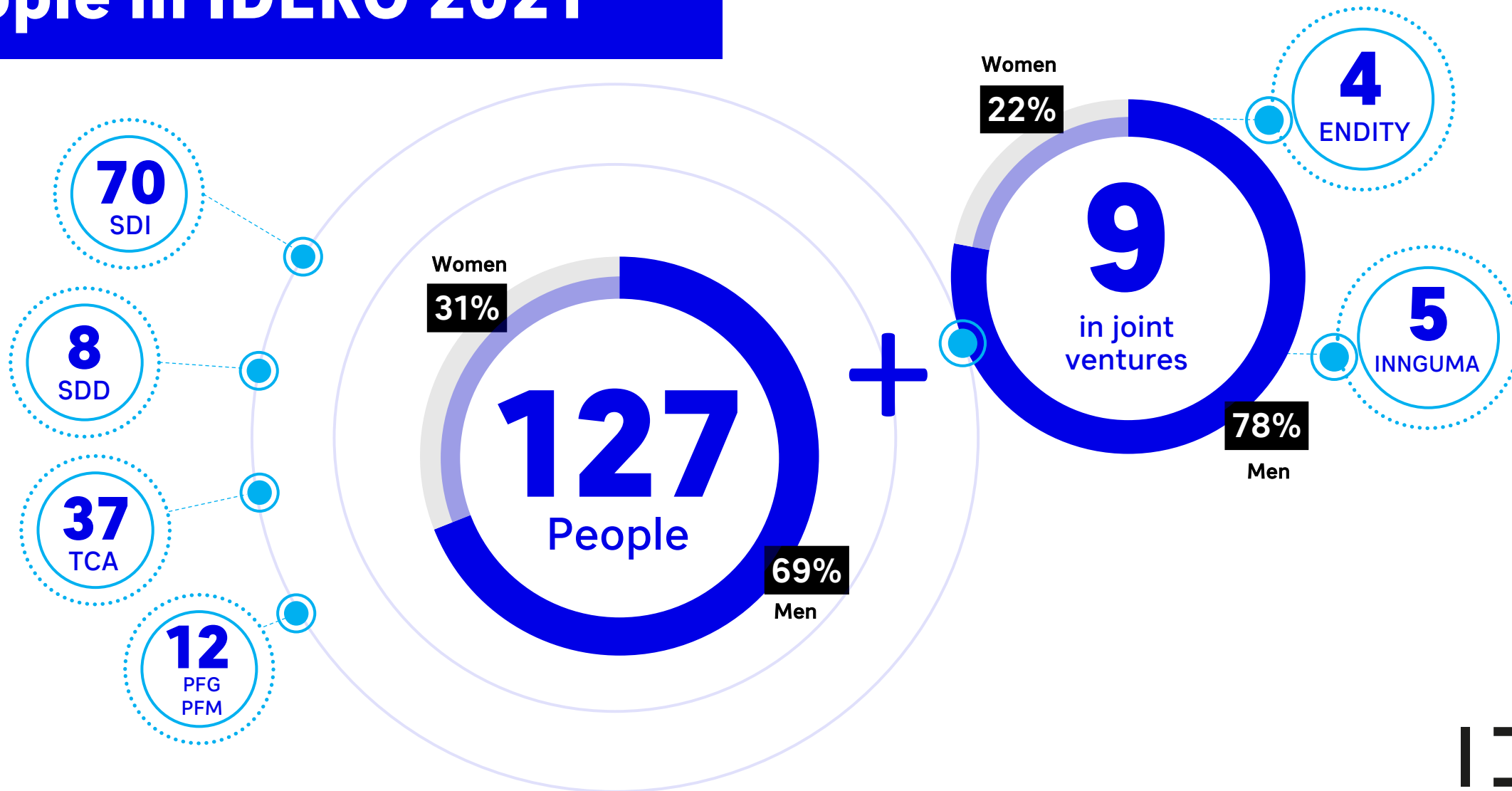
2021



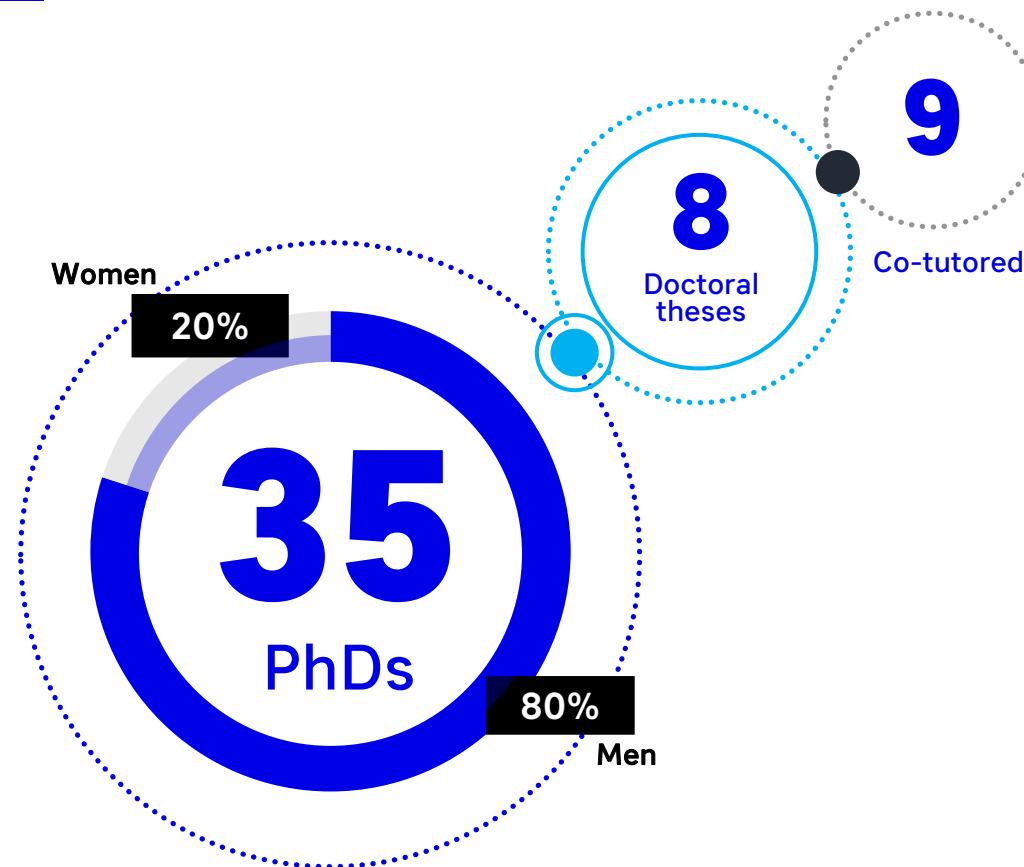
Highly qualified people to respond to the current and future needs of our clients in research, development and technology and knowledge transfer.

Our team

People in IDEKO 2021



Technological excellence



R&D activity

Our R&D activity is aimed at offering **innovative solutions** that contribute to the competitiveness of the industry.

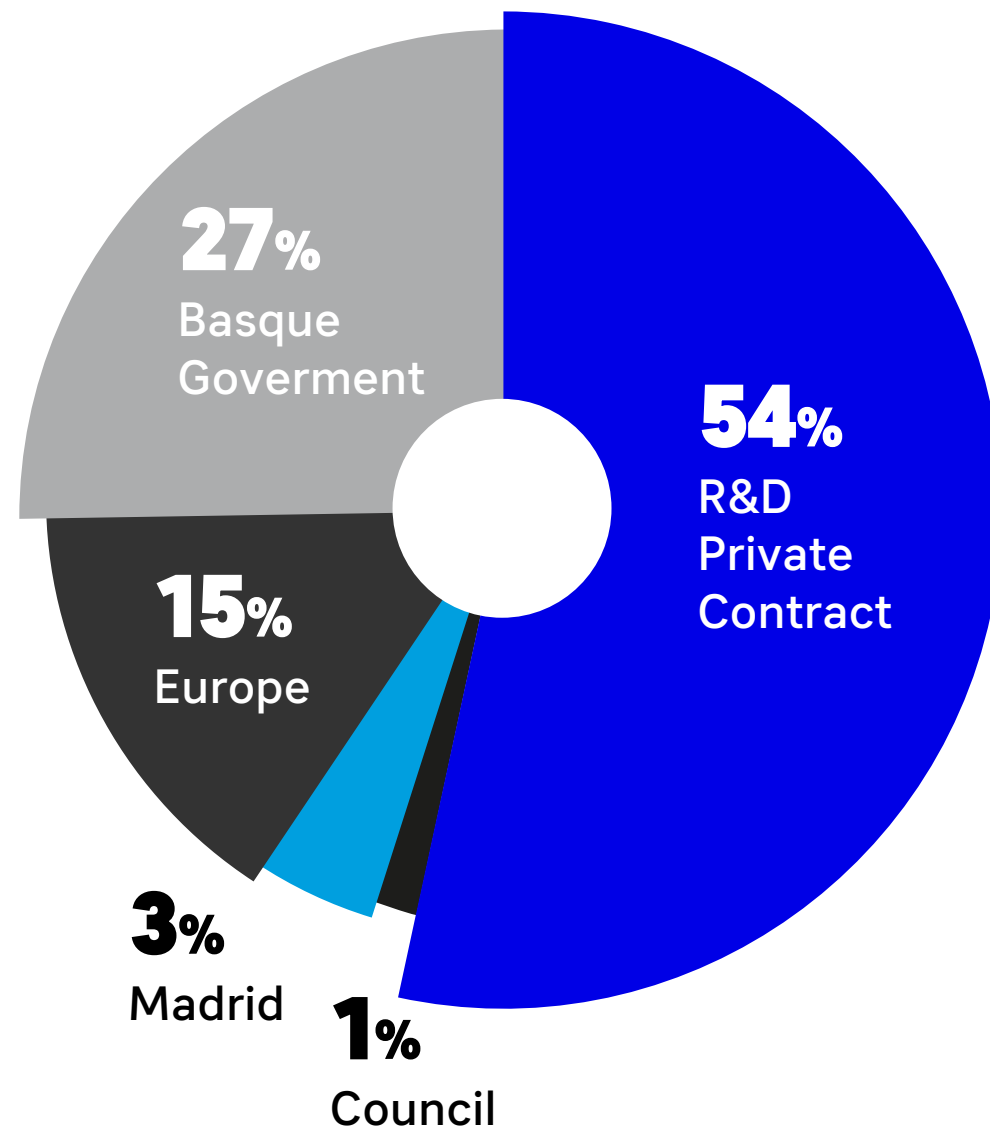


Incomes 2021

10M€

46% Own R&D

54% R&D Private contract





34

Patents

2

Startups



>150

Technology transfer projects

>30

Years coordinating
European Projects

9 Active EU
projects

Alliances & Collaborations



Alliances & Collaborations

Alliance
Network
+ than 100
R&D agents



Specialization Collaboration



AZTERLAN

AZTI

ceit

IDEKO

ikerlan

Leartiker

CICbioGUNE

CICbiomaGUNE

CIC
energ
GUNE

LORTEK

NEIKER

tecnal:a

CIC
nanogune

cidetec

Gaiker

T
Tekniker

vicomtech



BRTA

BASQUE RESEARCH
& TECHNOLOGY
ALLIANCE

3.700

Researchers

280

PhD/year

1.300

Scientific
Publications / year

100

Patents/year

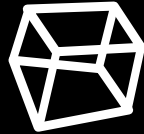
300 M €

Total incomes:
60% Public
Administration + 40%
Private Contract

We have **multi-disciplinary team** to generate knowledge, develop solutions and transform them into value on the market. We accompany you **from the first research phases** to the implementation of results in innovations **for the market**.

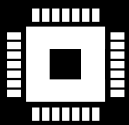
Specialization

**DYNAMICS &
CONTROL**



**MANUFACTURING
PROCESSES**

**TICS &
AUTOMATION**

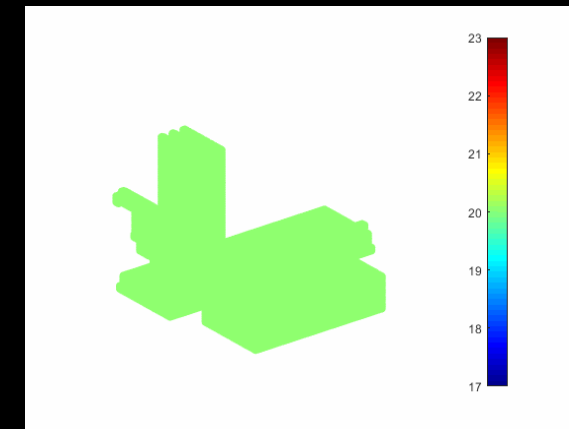


**DESIGN &
PRECISION
ENGINEERING**

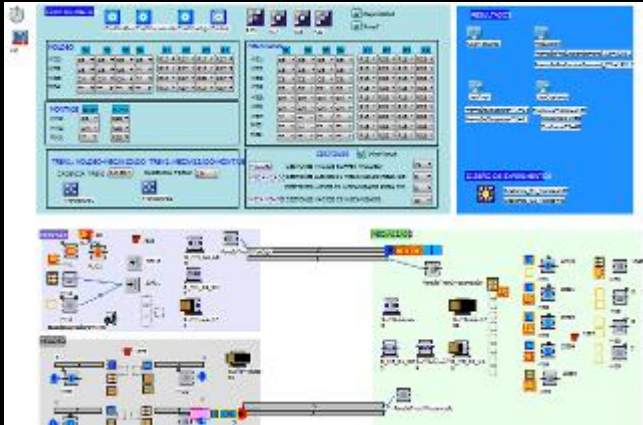


Design & Precision Engineering

This research group focuses on **high-performance product design and development** such as prototypes, mechanisms, structures, modelling and simulation of components. They develop measurement systems for precision and reliability with photogrammetry, laser, optics or contact sensors technologies. They also carry out behavioural studies of precision of equipment, mainly in relation to thermal effects and geometrical errors. This task is performed through experimental observation of compensation on the machine, the development of high-dynamics precision systems and calibration equipment.

[MORE INFO](#)

Manufacturing Processes



In order to **solve existing problems in industrial processes and increase efficiency and productivity of manufacturing processes**, it brings together the development of machining technologies by removal and abrasion, such as turning, grinding, milling, bending, drilling or laser together with the management and organization technologies of Industrial Production, such as simulation programs.

They incorporate **NDT technologies** for the inspection of parts and industrial processes with the aim of adding value and improving industrial production processes and ensuring the quality of the parts.

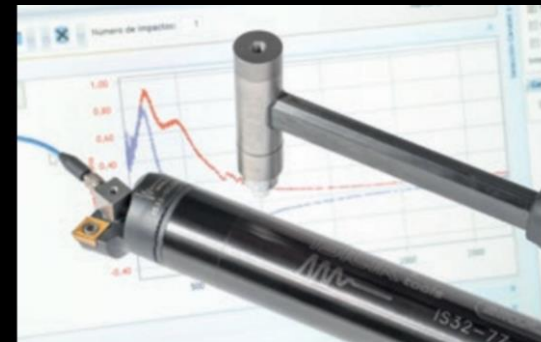
[MORE INFO](#) 

Dynamics & Control

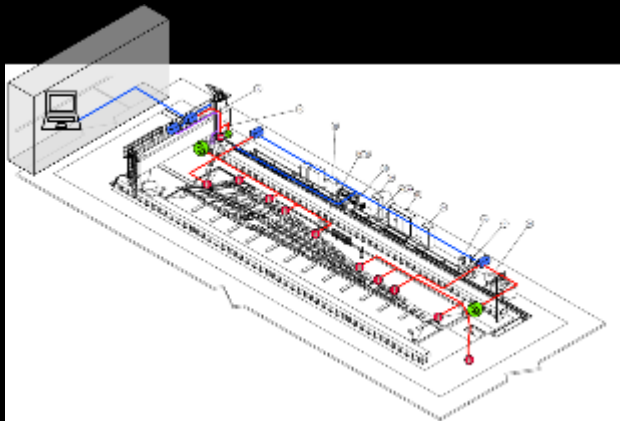
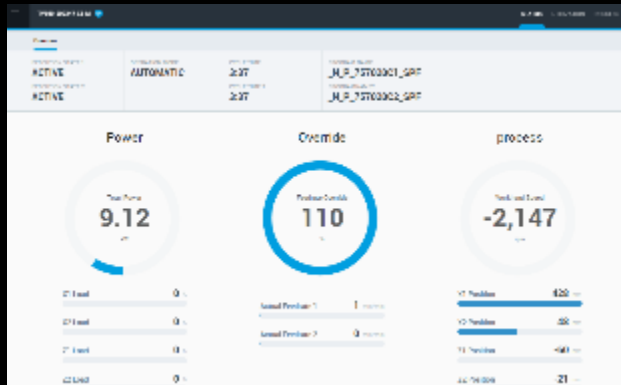
It develops technologies for the **characterization, modeling and design** of solutions to improve the **dynamic behavior of machines, mechatronic systems and machining processes**.

It has a recognized prestige in the international field of science and technology of the chatter in machining processes and machine dynamics.

[MORE INFO](#)



ICT & Automation



They develop software applications and automation solutions to provide advanced capabilities to **manufacturers of machines and manufacturing lines.**

They research and develop state-of-the-art **ICT solutions** with applicability in advanced manufacturing technologies and industrial production.

[MORE INFO](#)

7 Specialization Lines 2021 - 2024

MACHINE AND PRECISION PROCESSES

Development of precision solutions addressing the entire value chain: from the measurement and verification of the quality of the machined part, working on the process and machine technologies.

1

ARTIFICIAL INTELLIGENT IN MANUFACTURING

Application of AI techniques to obtain data performance on quality.

2

ACTIVE AND SMART COMPONENTS

Development of smart components that provide special functionalities, integrated into the machine or as accessory devices.

3

SIMULATION / DIGITAL TWINS

Development of models that allow designing and optimizing a production process in all its different scales.

4

STRATEGIC PARTS PROCESSES AND APPLICATIONS

Development of innovative solutions to provide a competitive advantage in special parts offers.

5

ROBOTICS

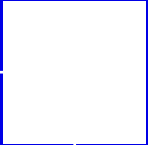
Collaborative application of robots with machines and operators, to provide them with special capabilities and functionalities and eliminate manual operations.

6

ADDITIVE MANUFACTURING

Applicability of additive manufacturing technologies. Prospective, new business opportunities.

7

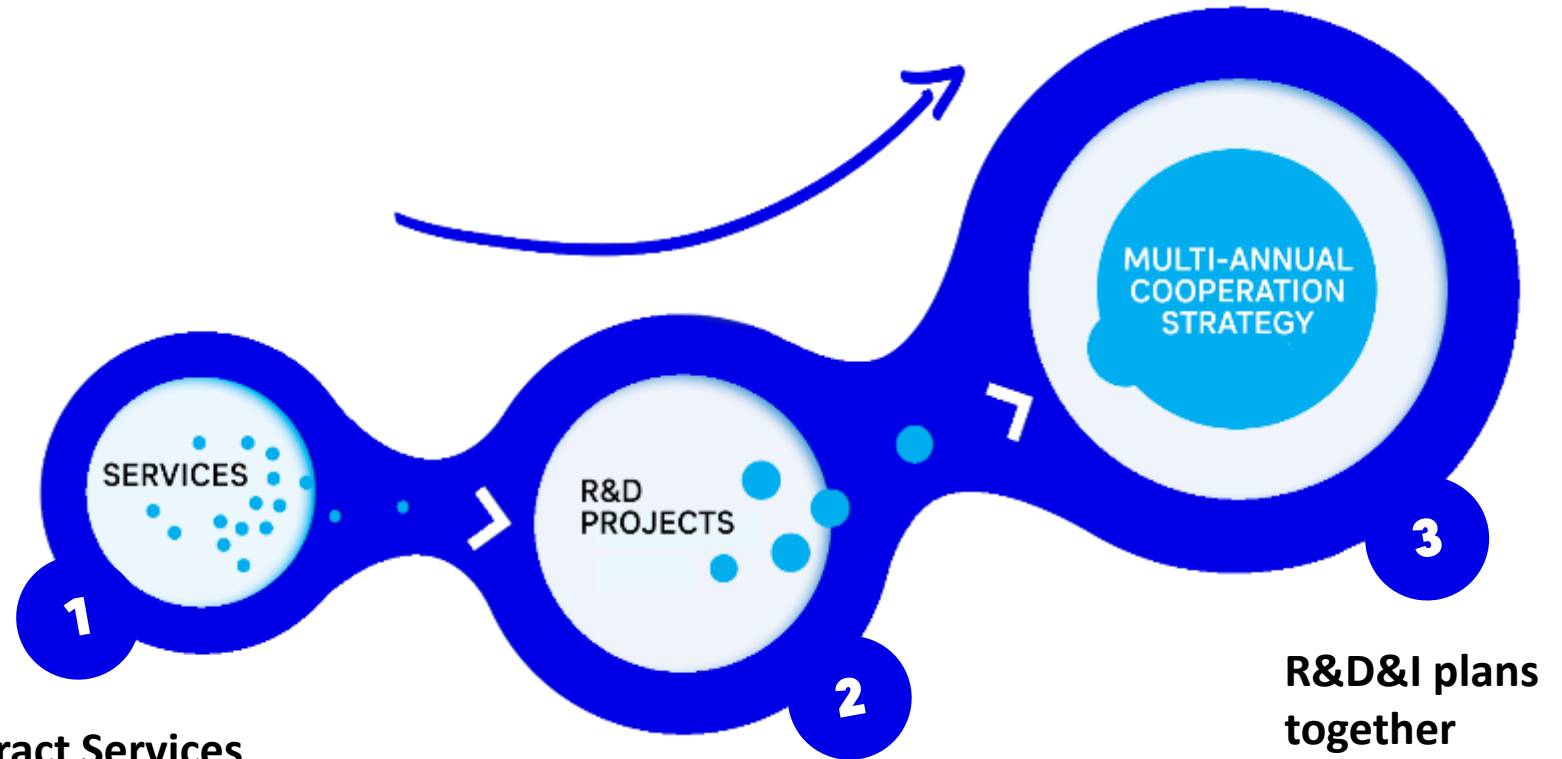


INNOVATION MANAGEMENT MODEL



Technological Partner

We offer an **integral solution** for the needs of today and the future in advanced manufacturing.



Contract Services

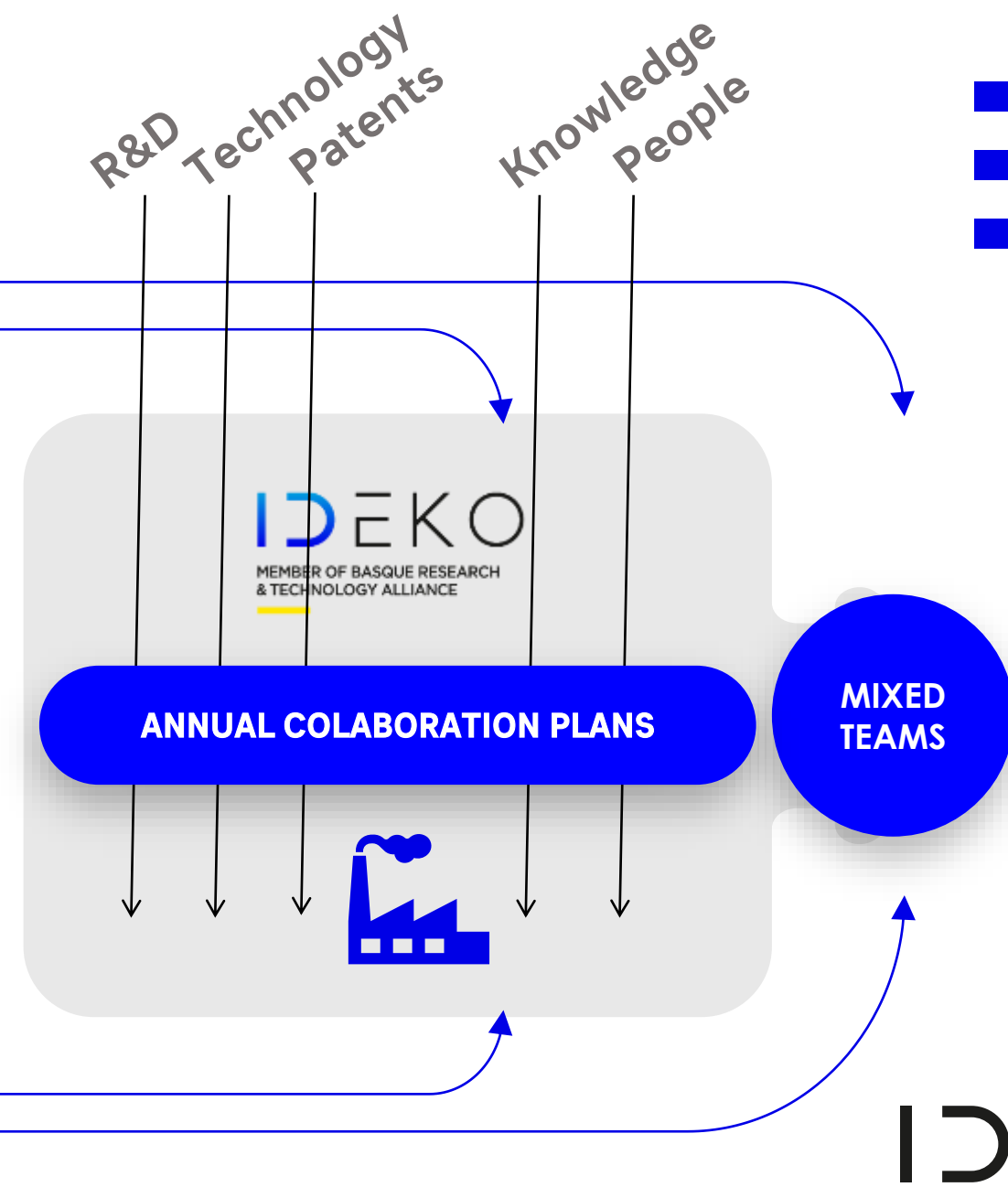
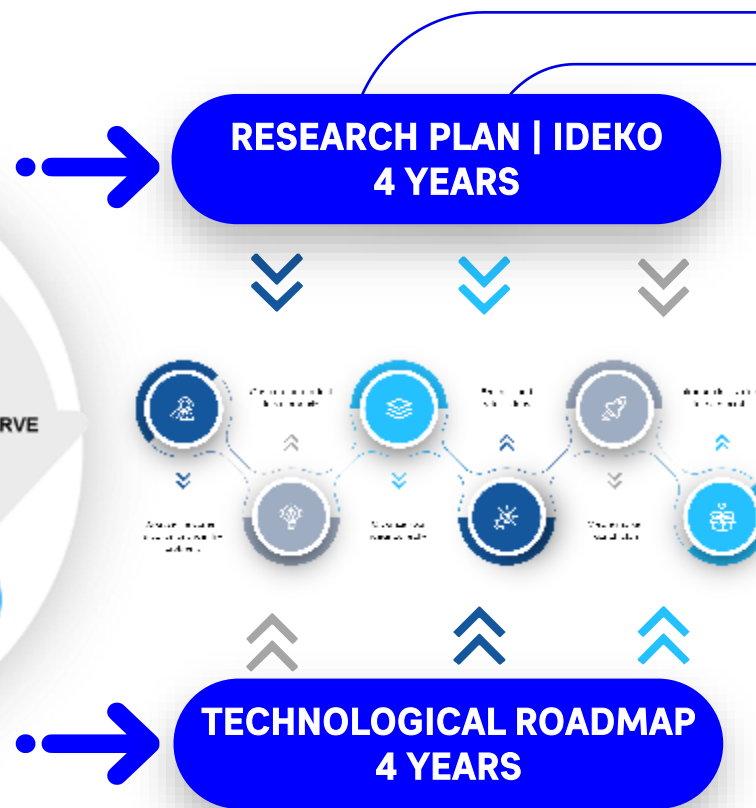
resolution of vibration problems, modal analysis, FEM calculations and simulations, or the provision of advanced measuring, inspection and verification services.

R&D projects

Knowledge and technology transfer.

R&D&I plans together

Technological Partner



AERNnova

euskotren

GOIMEK

DANOBAT

**DANOBAT
OVERBECK**

SORALUCE



**eUSKO
MACHINING**



ONA

SIKULAN



epc
Engine Power Components

Irizar



RONALGROUP

Tenaris



endity

IBERMACH
Special Machinery / Presses



Orona



ekin
thinking together



Loramendi
Total Performance in foundry



ZUBIOLA **DIAMOND
TOOLS
SOLUTIONS**

CAF



ITP Aero

Korta

sarralle



COMETEL



SAVVY



Alcorta
FORGING GROUP

ETXEPE

Ingeteam



sidenor

UNESA



ERLO
Group

Gestamp



SIEMENS

ULMA



Egile | DRIVEN BY
PRECISION



SIEMENS Gamesa
RENEWABLE ENERGY



FACILITIES



DIGITAL GRINDING
INNOVATION HUB



PRECISION
ENGINEERING LAB.



PRECISION
METROLOGY LAB.



HIGH
PERFORMANCE
DYNAMICS LAB.



COMPOSITES LAB.



LASER LAB.



CNC AND DIGITAL
FACTORY LAB.



PROTOTYPE
WORKSHOP

Facilities



IDEKO

MEMBER OF BASQUE RESEARCH
& TECHNOLOGY ALLIANCE



Arriaga kalea, 2 · E-20870 Elgoibar, GIPUZKOA | +34 943 748 000 | www.ideko.es |

